

 RS485 Modbus

 2 Digital Inputs

 1 Analogue Input

 16VDC Supply Voltage for External Sensor

 USB User Interface

 2.4 GHz Communication Frequency

 Lithium-Ion Battery

 Solar Panel 3W/ 4-7 VDC

### DEVICE FOR ISOLATED MEASURING POINTS

If you need to transmit an analog signal such as level, temperature or pressure from a distant location the FLUX RB10, in combination with one of our controllers FLUX CN1 or FLUX CT70, is the perfect choice.

The RB10 is a robust equipment and its small size prevents it from attracting too much attention and therefore reduces the risk of vandalism.

### COMMUNICATION

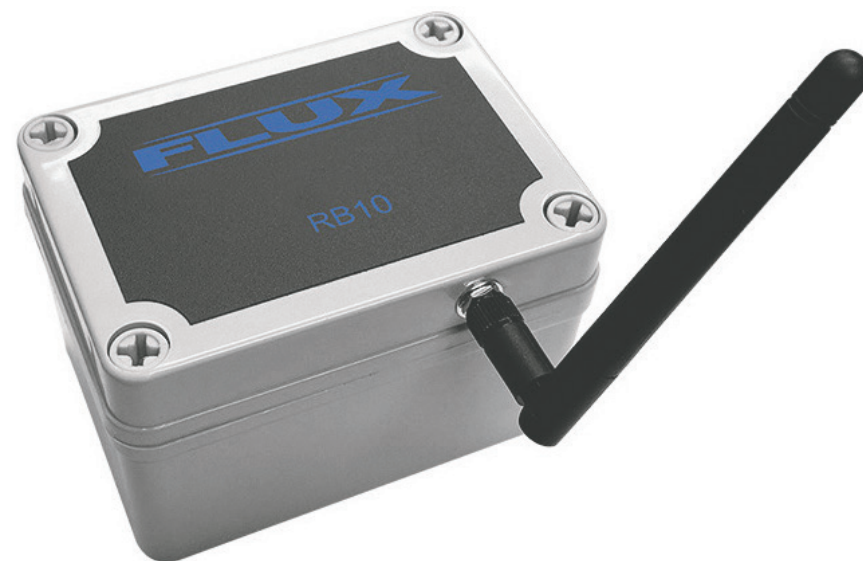
The FLUX RB10 is able to interrogate analog devices with a 4-20mA signal or devices that deliver a digital signal with Modbus RTU protocol and RS485 interface. When interrogating equipments with an RS485 interface, it is possible to view the records of multiple devices simultaneously using only one FLUX RB10.

### HIGHLY POWER EFFICIENT

The RB10 manages to take the efficient use of energy to another level. Due to its simple logic of operation, it is an extremely low-power-consuming telemetry equipment, which turns off the most energy consuming functions, allowing more efficient battery use.

### BATTERY BACK-UP

The FLUX RB10 works with great autonomy, due to its 1, 2 or 3 Lithium-Ion batteries (Ion = ion) that have a capacity of 3.000 mAh each. These batteries are rechargeable and are fed through the solar panel, this way achieving a reliable equipment for transmitting information.



The FLUX RB10 Telemetry Equipment is the ideal solution for obtaining data from isolated measuring points.

Supply Voltage for External Sensor	16VDC
Communication Frequency	2.4 GHz
USB port	USB User Interface, Mini USB Connector
Inputs	1 Analogue, 2 Digitals
Battery	Lithium-Ion
Charger	4-30 VDC charger
Power Supply	Solar Panel 3W/ 4-7 VDC
Antenna Connector	RP-SMA Female
Dimensions of Box (L x W)	10.1 x 7.7 cm
Electronics Protection	IP65